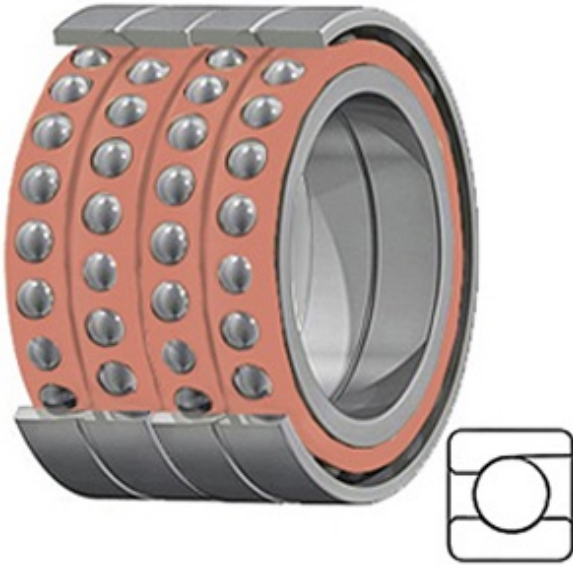




# KRY BEARING AFRICA PRIVATE LTD.



7009 ACD/P4AQBCC Bearing 2D drawings and 3D CAD models

1.772 Inch | 45 Millimeter x 2.953 Inch | 75 Millimeter x 2.52 Inch | 64 Millimeter SKF 7009 ACD/P4AQBCC Precision Ball Bearings

Bearing No. 7009 ACD/P4AQBCC

Category	Precision Ball Bearings
Inventory	0.0
Manufacturer Name	SKF
Minimum Buy Quantity	N/A
Weight	0.98
EAN	7316570784435
Product Group	B04270
Enclosure	Open
Precision Class	ABEC 7   ISO P4
Material - Ball	Steel
Number of Bearings	4 (1 Quadruplex Set)
Contact Angle	25 Degree
Preload	Heavy
Raceway Style	1 Rib Outer Ring
Cage Material	Phenolic
Rolling Element	Ball Bearing
Mounting Arrangement	Quadruplex-Tandem and Back to Back
Flush Ground	Yes
Inch - Metric	Metric
Other Features	Single Row   Angular Contact   High Precision
Long Description	45MM Bore; 75MM Outside Diameter; 64MM Width; Open Enclosure; ABEC 7   ISO P4 Precision;



## KRY BEARING AFRICA PRIVATE LTD.

	Steel Ball Material; 4 (1 Quadruplex Set) Bearings; 25 Degree Contact Angle; Phenolic Cage Material; 1 Rib Oute
Category	Precision Ball Bearings
UNSPSC	31171531
Harmonized Tariff Code	8482.10.50.28
Noun	Bearing
Keyword String	Angular Contact Ball
Manufacturer URL	<a href="http://www.skf.com">http://www.skf.com</a>
Manufacturer Item Number	7009 ACD/P4AQBCC
Weight / LBS	2.154
d	1.772 Inch   45 Millimeter
D	2.953 Inch   75 Millimeter
B	2.52 Inch   64 Millimeter
bore diameter:	45 mm
radial dynamic load capacity:	27.6 kN
outside diameter:	75 mm
radial static load capacity:	21.6 kN
overall width:	16 mm
outer ring width:	16 mm
contact angle:	25 °
maximum rpm:	26000 RPM
row type & fill slot:	Single-Row Non-Fill Slot
finish/coating:	Uncoated
internal clearance:	C0
precision rating:	ABEC 7 (ISO Class 4)
closure type:	Open
fillet radius:	1 mm
bearing material:	Steel
series:	70