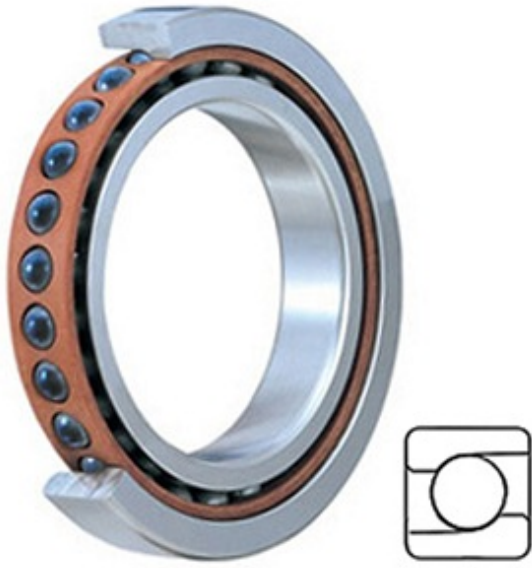




KRY BEARING AFRICA PRIVATE LTD.



7007 CEGA/HCP4A Bearing 2D drawings and 3D CAD models

1.378 Inch | 35 Millimeter x 2.441 Inch | 62 Millimeter x 0.551 Inch | 14 Millimeter SKF 7007 CEGA/HCP4A Precision Ball Bearings

Bearing No. 7007 CEGA/HCP4A

Category	Precision Ball Bearings
Inventory	0.0
Manufacturer Name	SKF
Minimum Buy Quantity	N/A
Weight	0
EAN	7316571836607
Product Group	B04270
Enclosure	Open
Precision Class	ABEC 7 ISO P4
Material - Ball	Ceramic
Number of Bearings	1 (Single)
Contact Angle	15 Degree
Preload	Light
Raceway Style	1 Rib Inner Ring and Outer Ring
Cage Material	Phenolic
Rolling Element	Ball Bearing
Mounting Arrangement	Universal
Flush Ground	Yes
Inch - Metric	Metric
Other Features	Single Row Angular Contact High Speed E Design
Long Description	35MM Bore; 62MM Outside Diameter; 14MM Width; Open Enclosure;



KRY BEARING AFRICA PRIVATE LTD.

	ABEC 7 ISO P4 Precision; Ceramic Ball Material; 1 (Single) Bearing; 15 Degree Contact Angle; Phenolic Cage Material; 1 Rib Inner Ring an
Category	Precision Ball Bearings
UNSPSC	31171531
Harmonized Tariff Code	8482.10.50.28
Noun	Bearing
Keyword String	Ball Angular Contact
Manufacturer URL	http://www.skf.com
Manufacturer Item Number	7007 CEGA/HCP4A
Weight / LBS	0.315
D	2.441 Inch 62 Millimeter
d	1.378 Inch 35 Millimeter
B	0.551 Inch 14 Millimeter