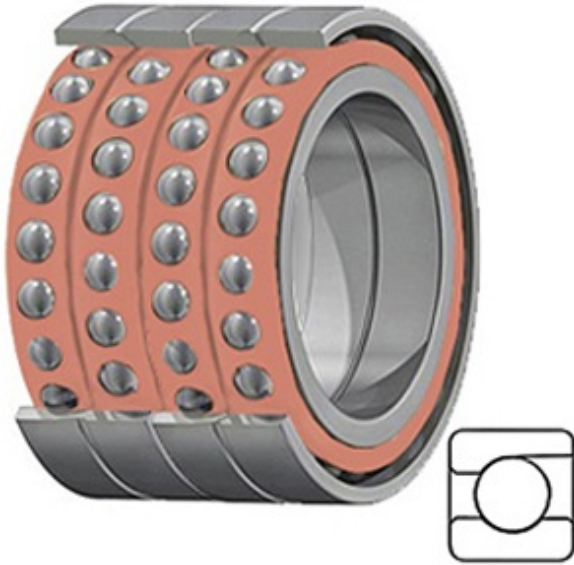




KRY BEARING AFRICA PRIVATE LTD.



3MM9121WI QUM Bearing 2D drawings and 3D CAD models

4.134 Inch | 105 Millimeter x 6.299 Inch | 160 Millimeter x 4.094 Inch | 104 Millimeter TIMKEN 3MM9121WI QUM Precision Ball Bearings

Bearing No. 3MM9121WI QUM

Category	Precision Ball Bearings
Inventory	0.0
Manufacturer Name	TIMKEN
Minimum Buy Quantity	N/A
Weight	6.477
EAN	0087796340411
Product Group	B04270
Enclosure	Open
Precision Class	ABEC 7 ISO P4
Material - Ball	Steel
Number of Bearings	4 (1 Quadruplex Set)
Contact Angle	25 Degree
Preload	Medium
Raceway Style	1 Rib Outer Ring
Cage Material	Phenolic
Rolling Element	Ball Bearing
Mounting Arrangement	Quadruplex-Universal
Flush Ground	Yes
Inch - Metric	Metric
Other Features	Single Row Angular Contact Super High Precision
Long Description	105MM Bore; 160MM Outside Diameter; 104MM Width; Open Enclosure; ABEC 7 ISO P4 Precision;



KRY BEARING AFRICA PRIVATE LTD.

	Steel Ball Material; 4 (1 Quadruplex Set) Bearings; 25 Degree Contact Angle; Phenolic Cage Material; 1 Rib O
Category	Precision Ball Bearings
UNSPSC	31171531
Harmonized Tariff Code	8482.10.50.28
Noun	Bearing
Keyword String	Angular Contact Ball
Manufacturer URL	http://www.timken.com
Manufacturer Item Number	3MM9121WI QUM
Weight / LBS	14.28
d	4.134 Inch 105 Millimeter
D	6.299 Inch 160 Millimeter
B	4.094 Inch 104 Millimeter