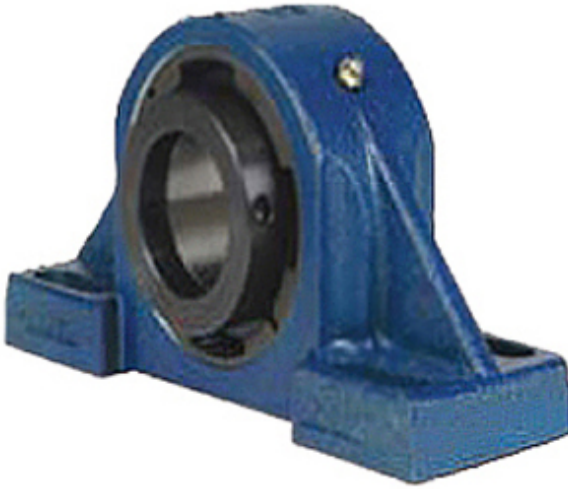




# KRY BEARING AFRICA PRIVATE LTD.



4.938 Inch | 125.425 Millimeter x 8.02 Inch |  
203.708 Millimeter x 6 Inch | 152.4 Millimeter QM  
INDUSTRIES QVVPH28V415SB Pillow Block  
Bearings

Bearing No. QVVPH28V415SB

QVVPH28V415SB Bearing 2D drawings and 3D CAD  
models

Category	Pillow Block Bearings
Inventory	0.0
Manufacturer Name	TIMKEN
Minimum Buy Quantity	N/A
Weight	56.296
EAN	0883450370158
Product Group	M06288
Number of Mounting Holes	4
Mounting Method	V Lock
Housing Style	4 Bolt Pillow Block
Rolling Element	Spherical Roller Bearing
Housing Material	Cast Steel
Expansion / Non-expansion	Non-expansion
Mounting Bolts	1 Inch
Relubricatable	Yes
Insert Part Number	22228
Seals	Double Lip Nitrile Rubber
Housing Configuration	1 Piece Solid
Inch - Metric	Inch
Other Features	Double Row   Double Nut   SAF Style
Long Description	4 Bolt Pillow Block; 4-15/16" Bore; 6" Base to Center Height; V Lock Mount; Spherical Roller



## KRY BEARING AFRICA PRIVATE LTD.

	Bearing; 16" Minimum Bolt Spacing; 17-1/8" Bolt Spacing Maximum; Relubricatable; Cast S
Category	Pillow Block
UNSPSC	31171511
Harmonized Tariff Code	8483.20.40.80
Noun	Bearing
Keyword String	Pillow Block
Manufacturer URL	<a href="http://www.qmbearings.com">http://www.qmbearings.com</a>
Weight / LBS	136
Bolt Spacing Minimum	16 Inch   406.4Millimeter
Actual Bolt Center to Center	0 Inch   0Millimeter
D	8.02 Inch   203.708 Millimeter
Bolt Spacing Maximum	17.125 Inch   434.975Millimeter
B	6 Inch   152.4 Millimeter
d	4.938 Inch   125.425 Millimeter
Nominal Bolt Center to Center	16.6 Inch   420.7 Millimeter