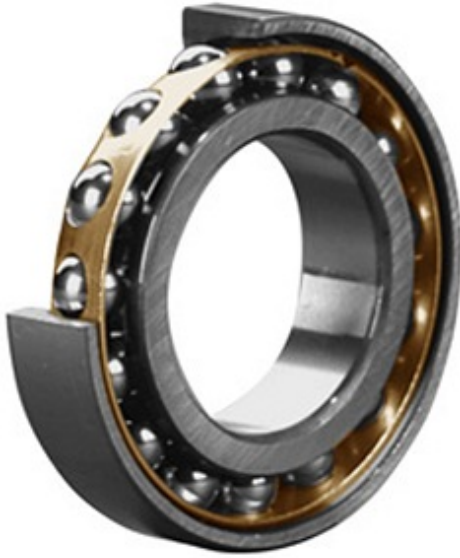




# KRY BEARING AFRICA PRIVATE LTD.



1.772 Inch | 45 Millimeter x 3.346 Inch | 85 Millimeter x 0.748 Inch | 19 Millimeter SKF 7209 BECBM/W64 Angular Contact Ball Bearings

Bearing No. 7209 BECBM/W64

7209 BECBM/W64 Bearing 2D drawings and 3D CAD models

Category	Angular Contact Ball Bearings
Inventory	0.0
Manufacturer Name	SKF
Minimum Buy Quantity	N/A
Weight	0
Product Group	B00308
Enclosure	Open
Flush Ground	Yes
Rolling Element	Ball Bearing
Number of Rows of Balls	Single Row
Precision Class	ABEC 1   ISO P0
Maximum Capacity / Filling Slot	No
Snap Ring	No
Cage Material	Brass
Contact Angle	40 Degree
Internal Clearance	CB
Number of Bearings	1 (Single)
Mounting Arrangement	Universal
Inch - Metric	Metric
Long Description	45MM Bore; 85MM Outside Diameter; 19MM Width; Open; Yes Flush Ground; Ball Bearing; Single Row of Balls; ABEC 1   ISO P0; No Filling Slot; No Snap



## KRY BEARING AFRICA PRIVATE LTD.

	Ring; CB; Brass Cage; 40 Degree; 1 (Single); Universa
Other Features	Normal Axial Internal Clearance
Category	Angular Contact Ball Bearing
UNSPSC	31171531
Harmonized Tariff Code	8482.10.50.28
Noun	Bearing
Keyword String	Angular Contact
Manufacturer URL	<a href="http://www.skf.com">http://www.skf.com</a>
D	3.346 Inch   85 Millimeter
d	1.772 Inch   45 Millimeter
B	0.748 Inch   19 Millimeter