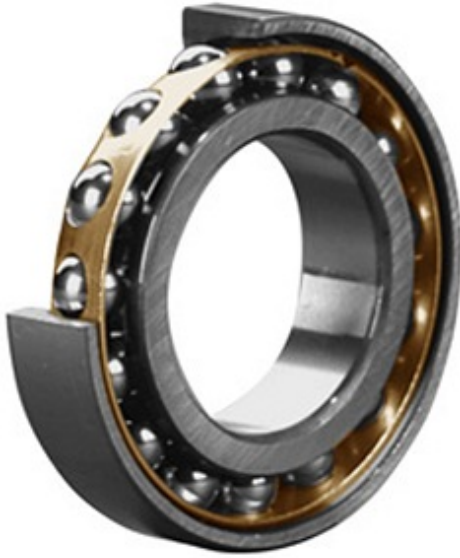




KRY BEARING AFRICA PRIVATE LTD.



7320 BECCM Bearing 2D drawings and 3D CAD models

100 mm x 215 mm x 47 mm SKF 7320 BECCM
Angular Contact Ball Bearings

Bearing No. 7320 BECCM

| | |
|---------------------------------|--|
| Category | Angular Contact Ball Bearings |
| Inventory | 0.0 |
| Manufacturer Name | SKF |
| Minimum Buy Quantity | N/A |
| Weight | 8.01 |
| EAN | 7316571211459 |
| Product Group | B00308 |
| Enclosure | Open |
| Flush Ground | Yes |
| Rolling Element | Ball Bearing |
| Number of Rows of Balls | Single Row |
| Precision Class | ABEC 3 ISO P6 |
| Maximum Capacity / Filling Slot | No |
| Snap Ring | No |
| Cage Material | Brass |
| Contact Angle | 40 Degree |
| Internal Clearance | CC |
| Number of Bearings | 1 (Single) |
| Mounting Arrangement | Universal |
| Inch - Metric | Metric |
| Long Description | 100MM Bore; 215MM Outside Diameter; 47MM Width; Open; Yes Flush Ground; Ball Bearing; Single Row of Balls; ABEC 3 ISO P6; No Filling Slot; No Snap |



KRY BEARING AFRICA PRIVATE LTD.

| | |
|---|---|
| | Ring |
| Other Features | Axial Internal Clearance Greater Than Normal |
| Category | Angular Contact Ball Bearing |
| UNSPSC | 31171531 |
| Harmonized Tariff Code | 8482.10.50.28 |
| Noun | Bearing |
| Keyword String | Angular Contact |
| Manufacturer URL | http://www.skf.com |
| Manufacturer Item Number | 7320 BECCM |
| Weight / LBS | 17.646 |
| d | 3.937 Inch 100 Millimeter |
| D | 8.465 Inch 215 Millimeter |
| B | 1.85 Inch 47 Millimeter |
| d | 100 mm |
| D | 215 mm |
| B | 47 mm |
| d ₁ | 144.5 mm |
| d ₂ | 120.46 mm |
| D ₁ | 173.75 mm |
| a | 90 mm |
| r _{1,2} min. | 3 mm |
| r _{3,4} min. | 1.1 mm |
| d _a min. | 114 mm |
| D _a max. | 201 mm |
| D _b max. | 208 mm |
| r _a max. | 2.5 mm |
| r _b max. | 1 mm |
| Basic dynamic load rating C | 216 kN |
| Basic static load rating C ₀ | 208 kN |
| Fatigue load limit P _u | 6.95 kN |
| Reference speed | 3800 r/min |



KRY BEARING AFRICA PRIVATE LTD.

| | |
|--------------------------|------------|
| Limiting speed | 5000 r/min |
| Calculation factor A | 0.63 |
| Calculation factor k_r | 0.1 |
| Calculation factor e | 1.14 |
| Calculation factor X | 0.35 |
| Calculation factor Y_0 | 0.26 |
| Calculation factor Y_2 | 0.57 |
| Calculation factor X | 0.57 |
| Calculation factor Y_0 | 0.52 |
| Calculation factor Y_1 | 0.55 |
| Calculation factor Y_2 | 0.93 |
| Mass bearing | 7.5 kg |